

**NPAFC International Symposium on Bering-Aleutian Salmon
International Surveys (BASIS):**

Climate Change, Production Trends and Carrying Capacity of Pacific Salmon in the Bering Sea and Adjacent Waters

**November 23-25, 2008
Sheraton Seattle Hotel, Seattle, WA, USA**

Call for Papers

Three-day symposium will include oral and poster presentations. Abstracts (less than 400 words) must be submitted to NPAFC Secretariat by April 28, 2008. All papers presented at the symposium will be considered for publication in a NPAFC Bulletin series following peer-review.

Registration

Please complete your registration no later than October 6, 2008 via on-line, mail or fax.

For More Information

Please visit the NPAFC website (www.npafc.org) or contact NPAFC Secretariat.



North Pacific Anadromous Fish Commission

Suite 502, 889 West Pender Street, BC, Canada V6C 3B2; Phone: 1-804-775-5550;
Fax: 1-804-775-5577; E-mail: secretariat@npafc.org; Website: <http://www.npafc.org>

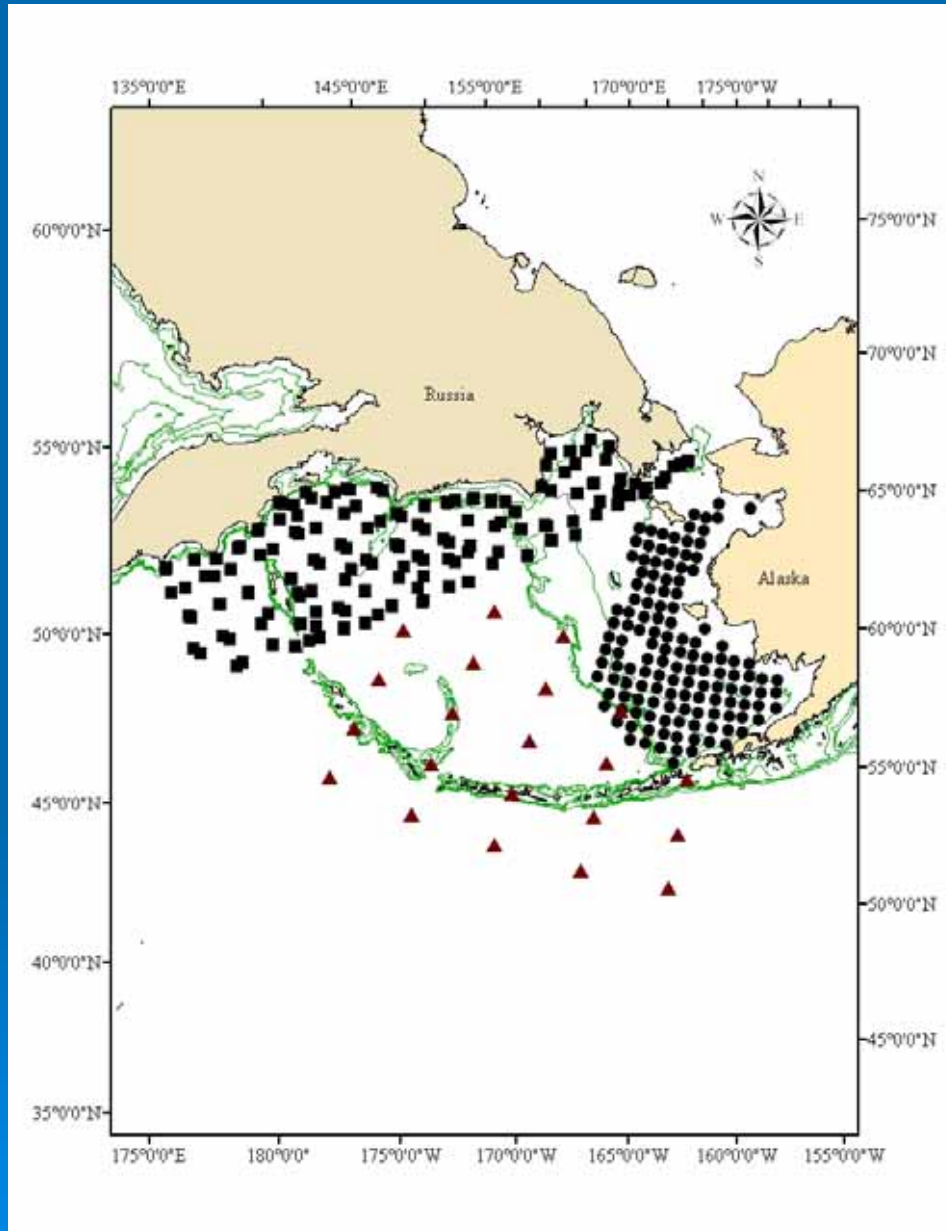
BASIS

WELCOME

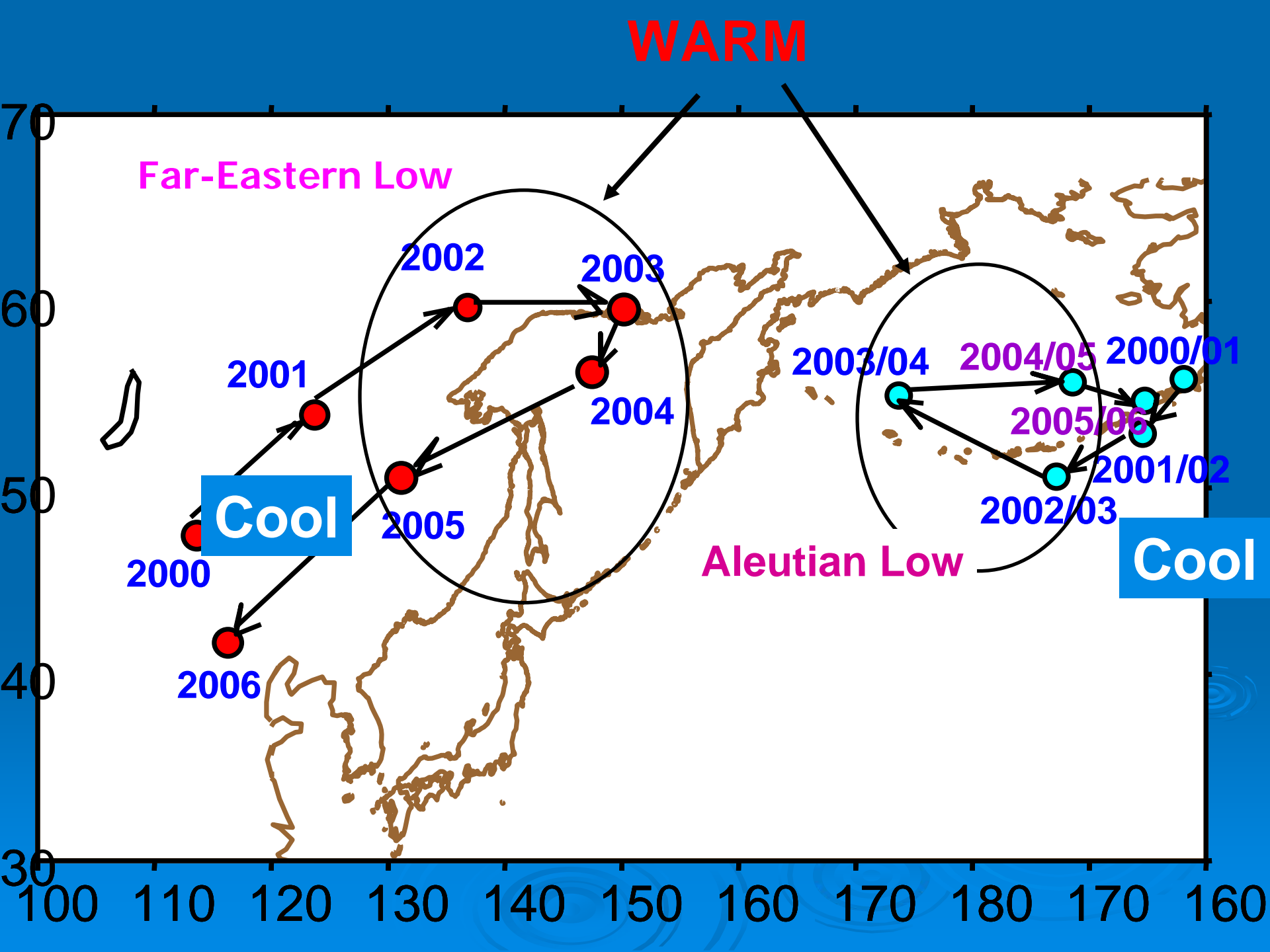


Canada Japan Korea Russia U.S.A.

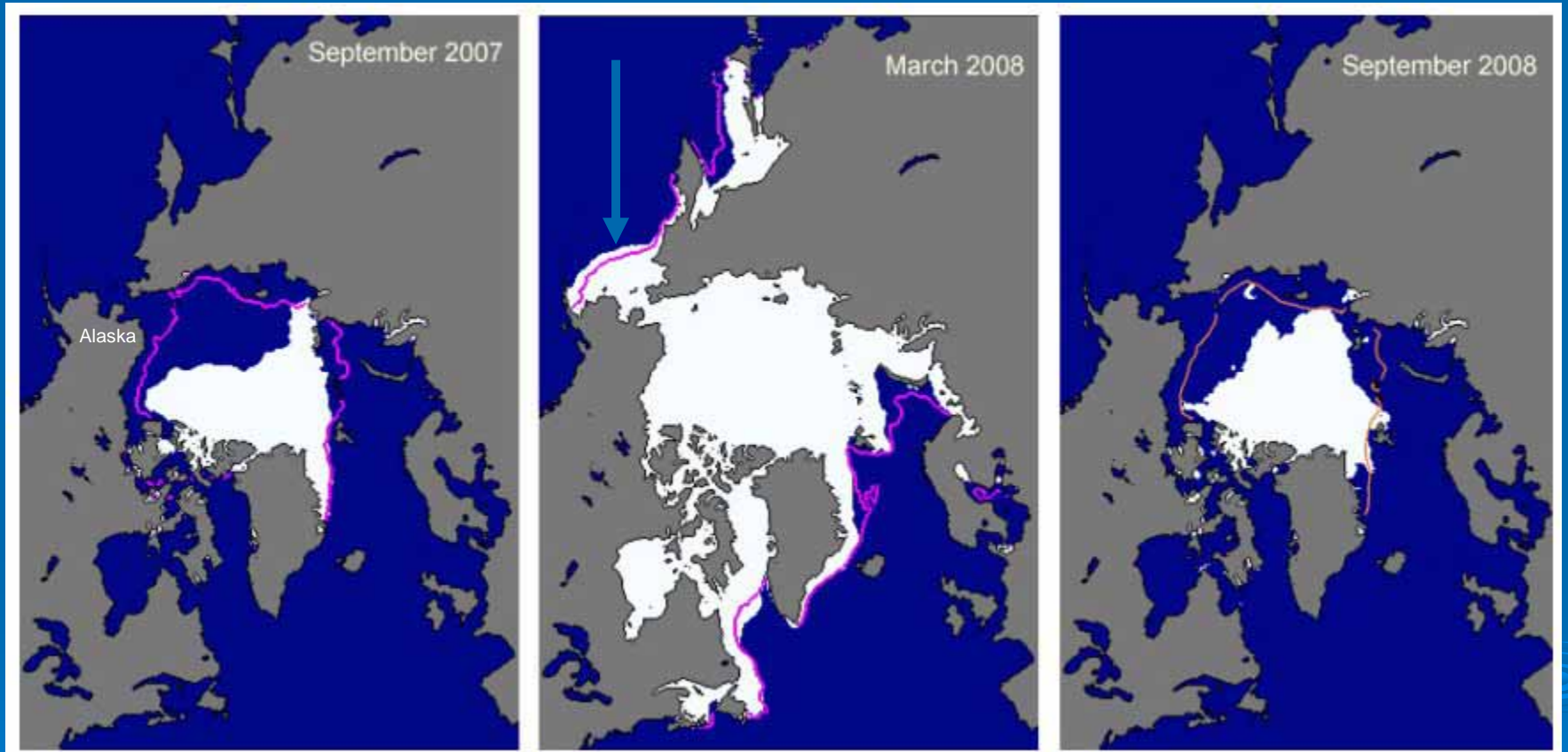
NPAFC – BASIS (2002 – Present)



GOAL: To understand how climate affects Pacific salmon carrying capacity in the Bering Sea

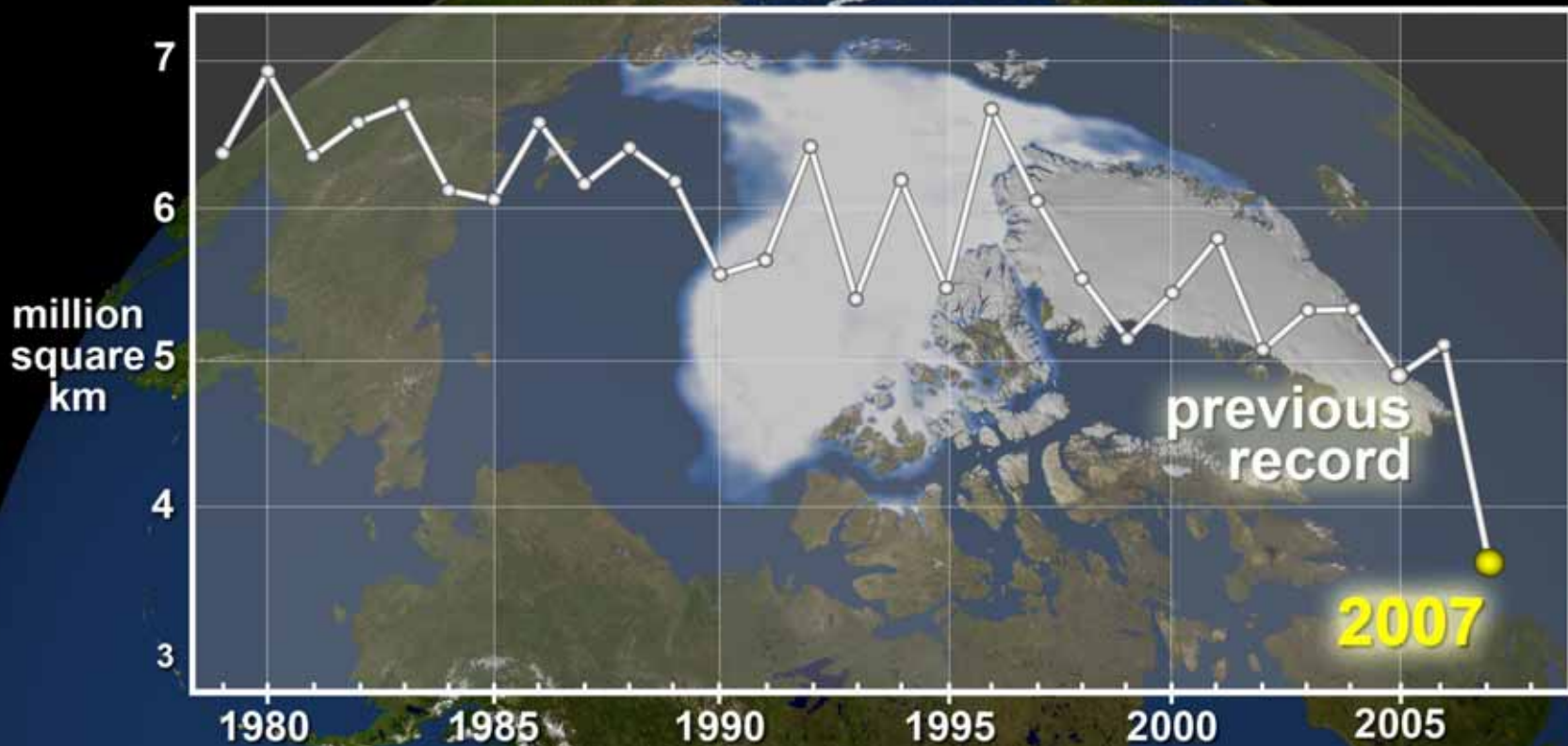


SEA ICE EXTENT



Sea ice extent in (left) September 2007, (center) March 2008 and (right) September 2008, illustrating the respective winter maximum and summer minimum extents. The magenta line indicates the median maximum and minimum extent of the ice cover, for the period 1979–2000. The September 2007 minimum extent marked a record minimum for the period 1979–2008. [Figures from the National Snow and Ice Data Center Sea Ice Index: [nsidc.org/data/ seaice_index](http://nsidc.org/data/seaice_index).]

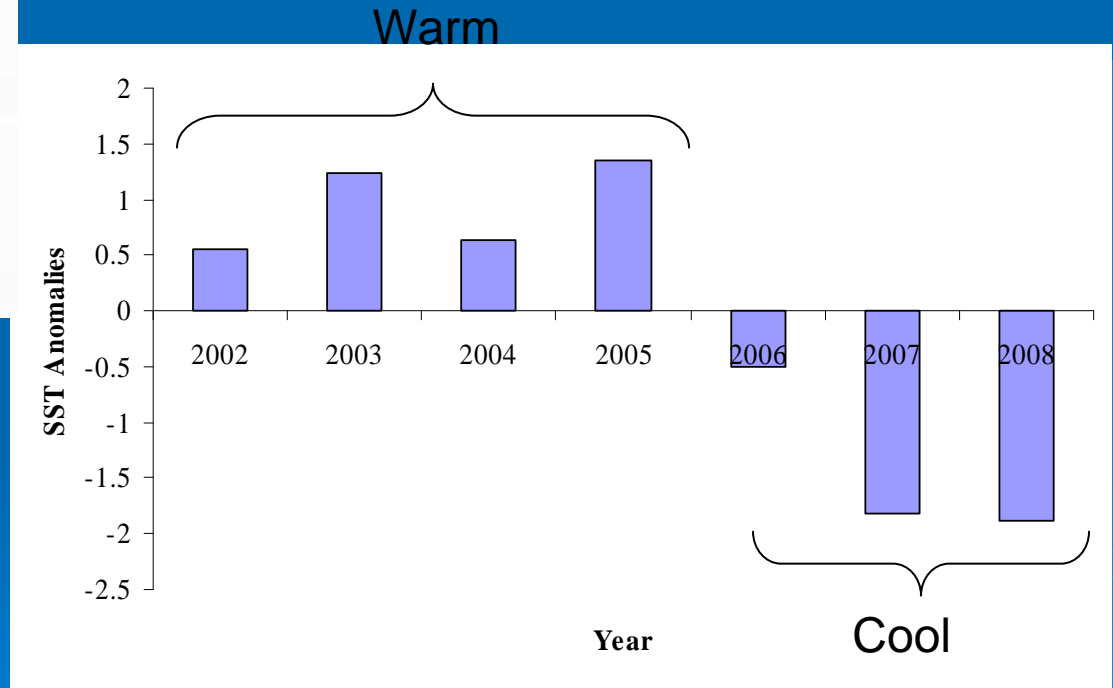
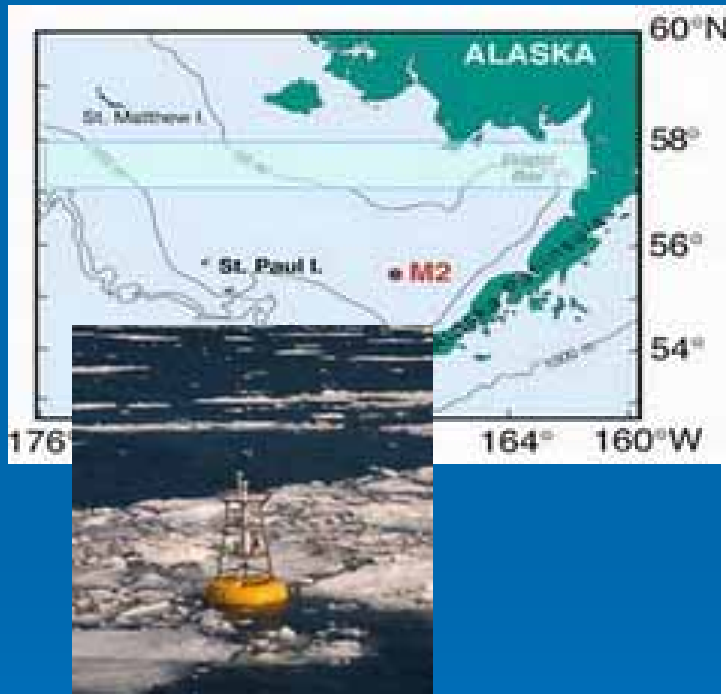
Annual Sea Ice Minimum



NASA, September 2007

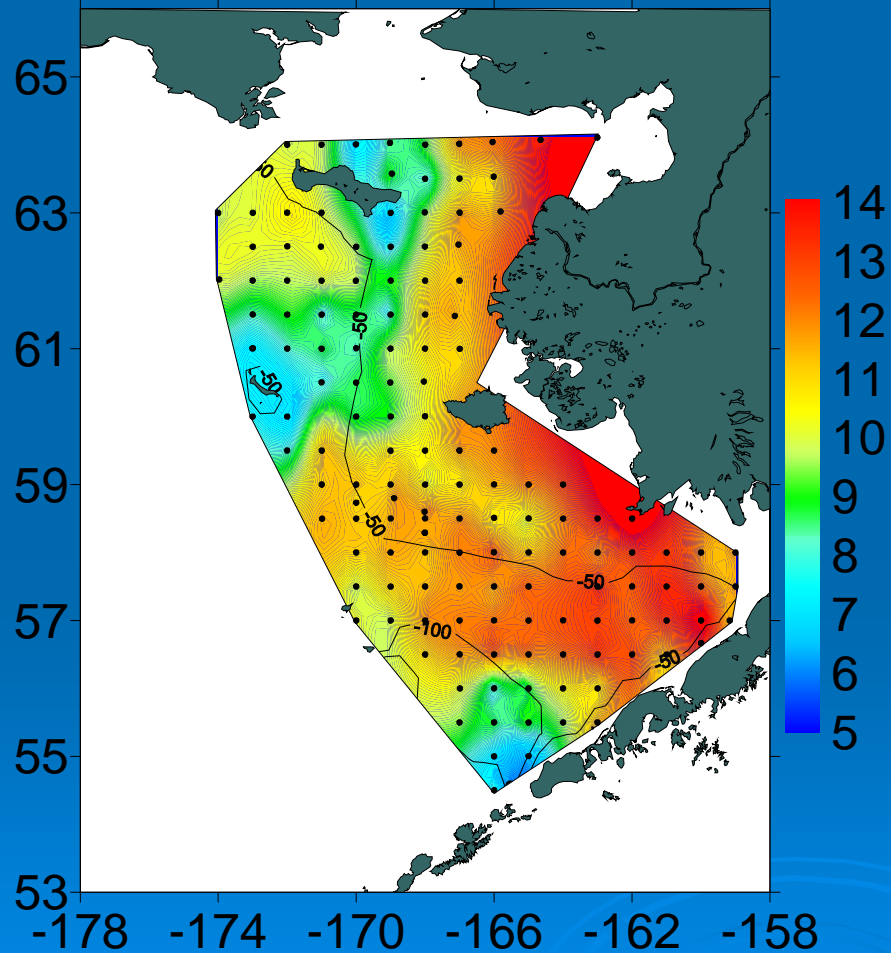
http://www.nasa.gov/vision/earth/environment/arctic_minimum.html

Spring Sea Temperatures

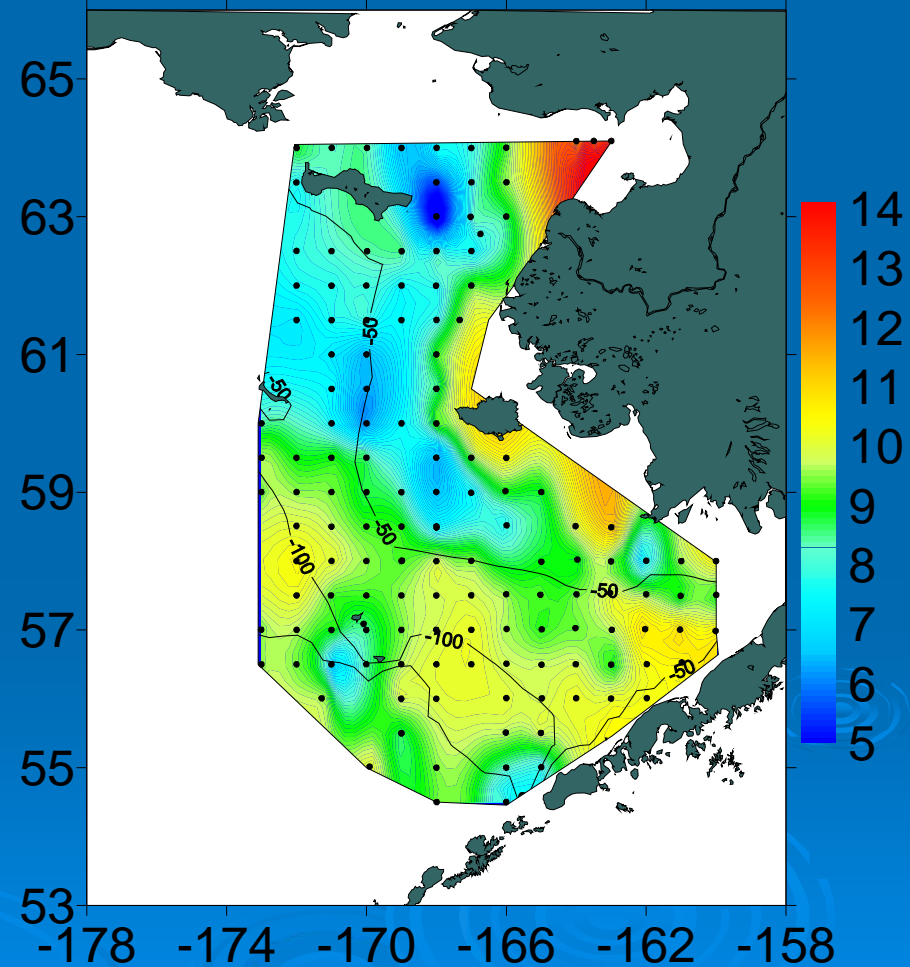


Sea Surface Temperatures During Fall

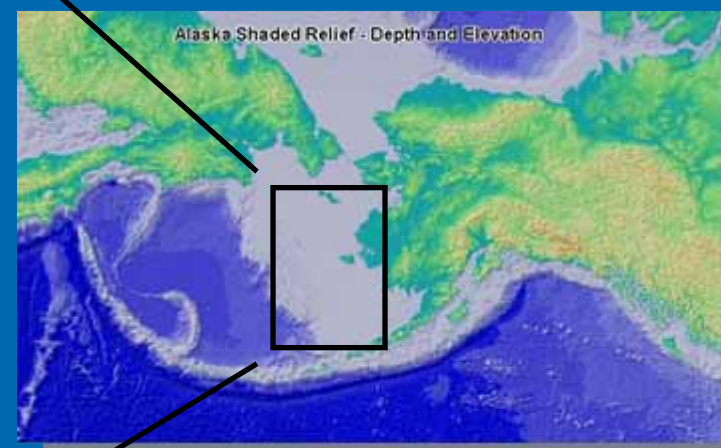
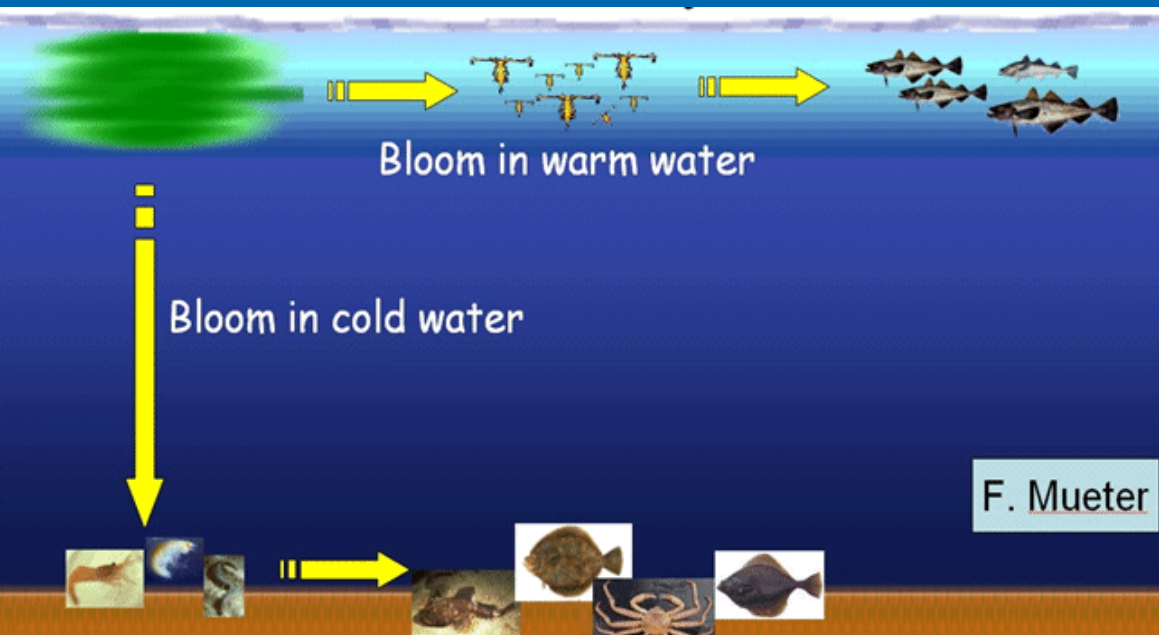
2004



2006

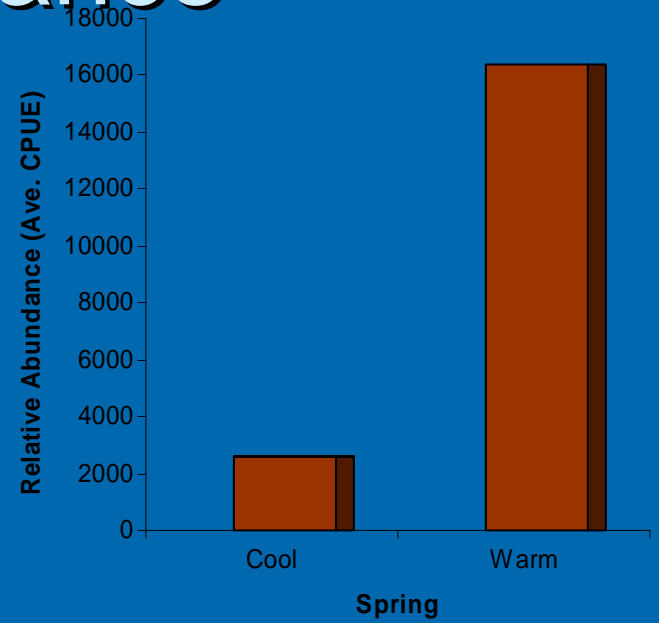


Productivity of the Eastern Bering Sea Ecosystem



Age 0 Pollock Abundance

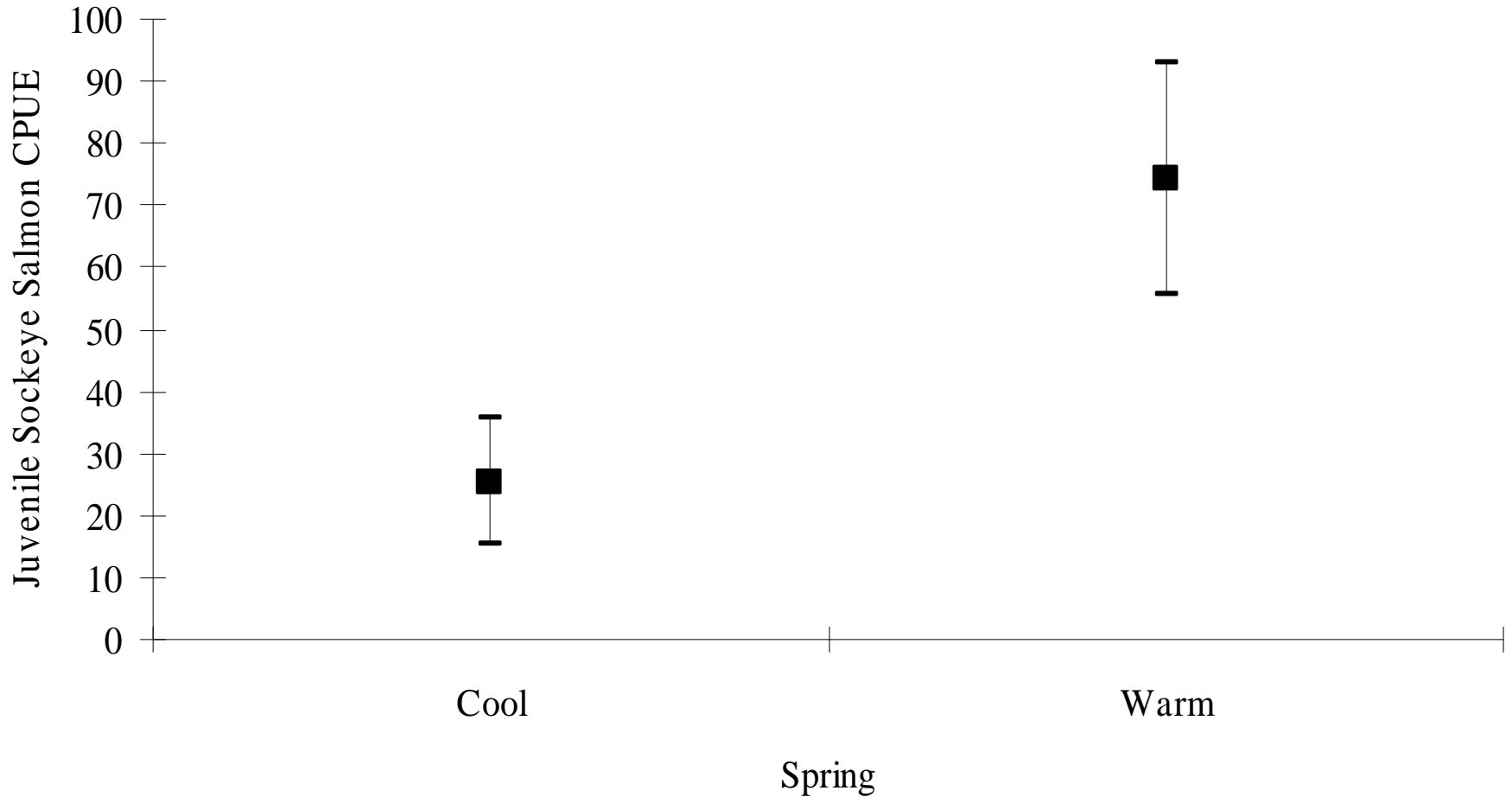
WARM



COOL

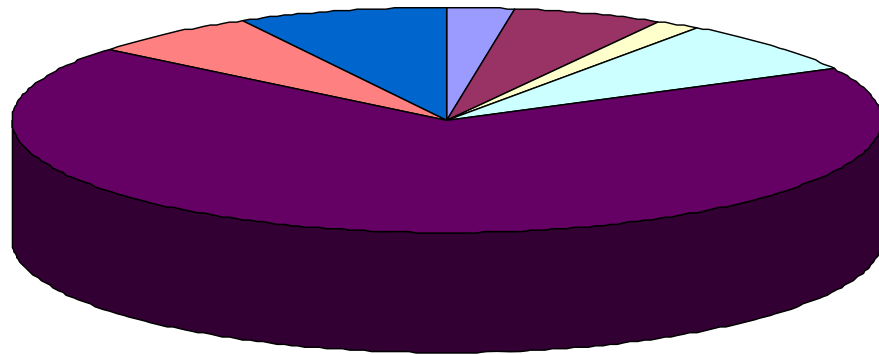


Bristol Bay Sockeye Salmon Abundance



Juvenile Sockeye Salmon Diets

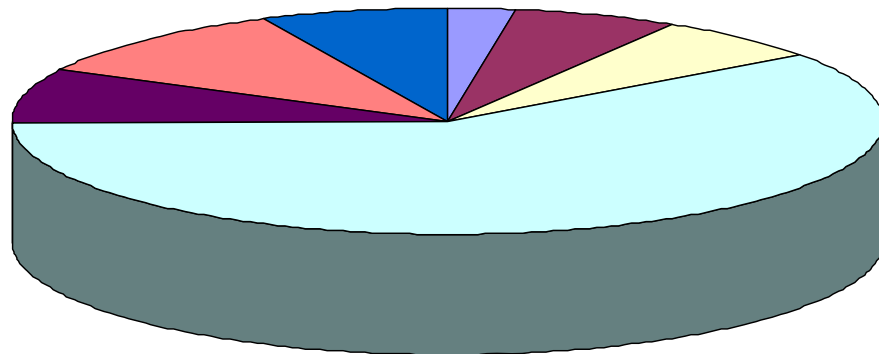
Warm SST



- Other Zoop
- Other Fish
- Amphipod
- Euphausiids
- Age 0 pollock
- Crab larvae
- Limacina



Cool SST

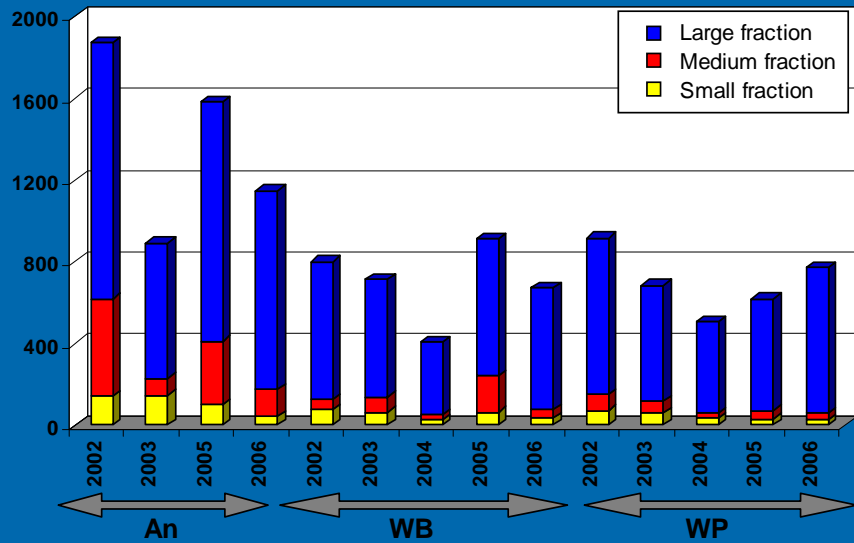


- Other Zoop
- Other Fish
- Amphipod
- Euphausiids
- Age 0 pollock
- Crab larvae
- Limacina

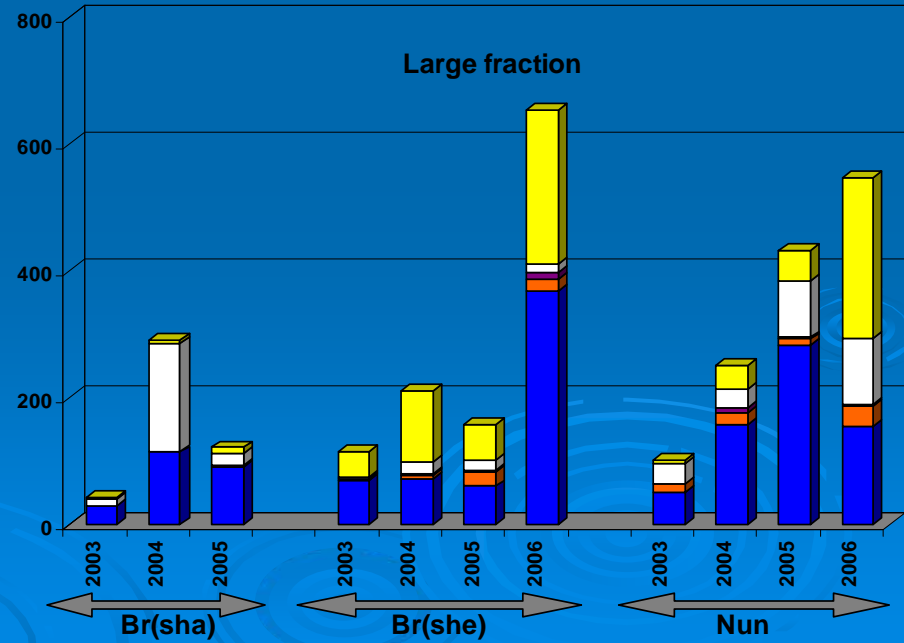
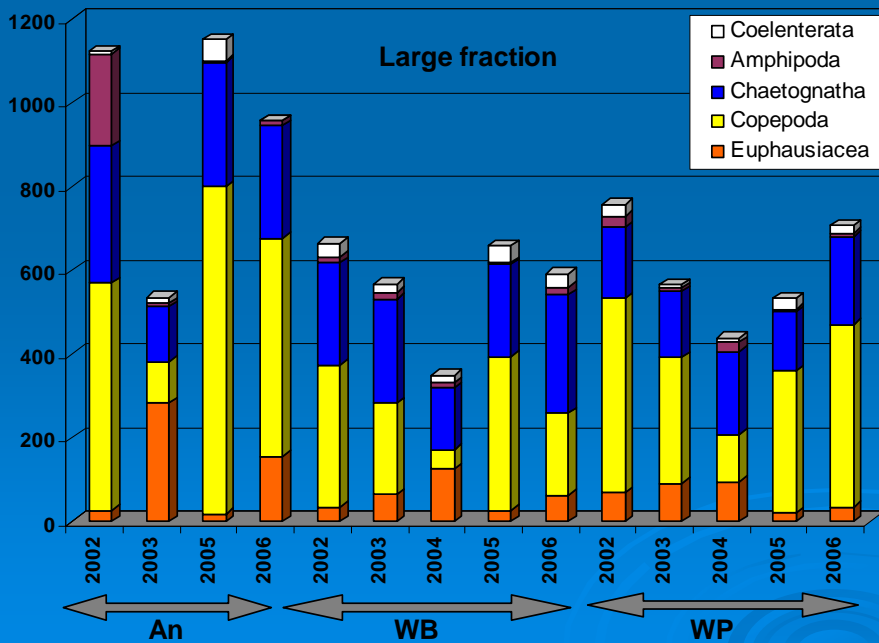
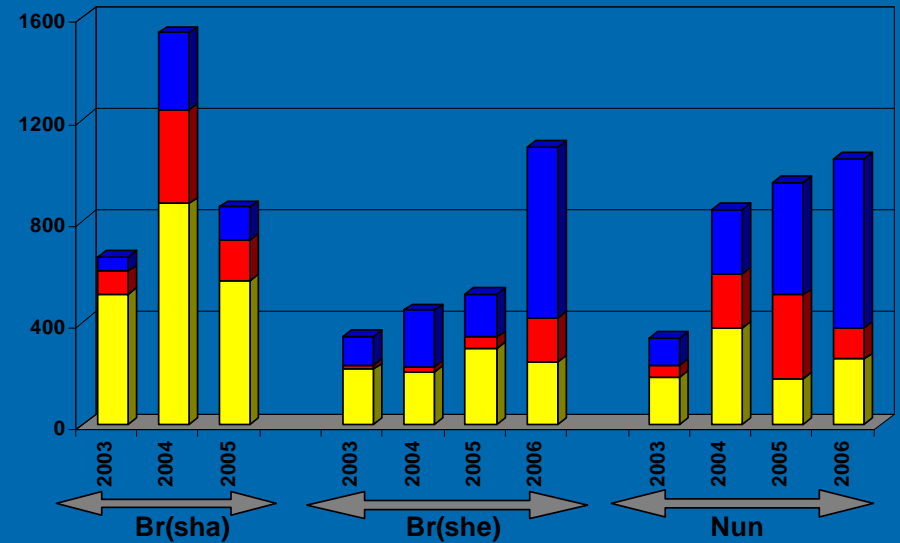


Biomass of Zooplankton

Western Region



Eastern Region



Dr. John H. Helle

49!

Years of Federal Service

